

17" Roller Coater Glue Spreader



Spec Sheet

Quick Machinery Company
23905 Clinton Keith 114-243
Wildomar, CA 92595
Phone: (951) 691-6086
Fax: (866) 399-1308



Machine Type:

ROLLER COATER GLUE SPREADER

Model Numbers:

R-RCGS-1-17 (one-sided) or R-RCGS-2-17 (two-sided)

Description:

17" width capacity, zero to 1.75" opening Roller Coater Glue Spreader.

Features 8" diameter grooved acid- and heat-resistant SBR rubber-covered glue roll(s) and 5.8" diameter chrome-plated doctor roll(s), powered by a 2hp electric motor, with either a standard fixed feed rate of 80 feet per minute or an optional variable feed rate of 40 to 118 feet per minute. Glue spread and material thickness adjustments are made by turning chrome-plated hand wheels. Aluminum drip pan catches clean-up water. Includes roll guards and emergency stop bars (older-style stop wires are shown in photo) for operator safety. High-quality urethane finish.

Dimensions:

38"W x 36"D x 52"H

Weight:

Net: 770 lbs.; Shipping: 840 lbs.

Electrical Requirements:

220v or 440v, 3-phase, 15 amps

Air Requirements:

None

Price (U.S. Dollars):

(prices include roll guards)

For 1-sided glue application: \$11,100.00 f.o.b. Los Angeles, CA
For 2-sided glue application: \$12,100.00 f.o.b. Los Angeles, CA
(add \$1000.00 for optional Variable Speed Control, as shown)

Please Contact:

Kevin Quick at Quick Machinery Company, 951-691-6086

17" Roller Coater Glue Spreader



Industrial-Duty Glue Spreader

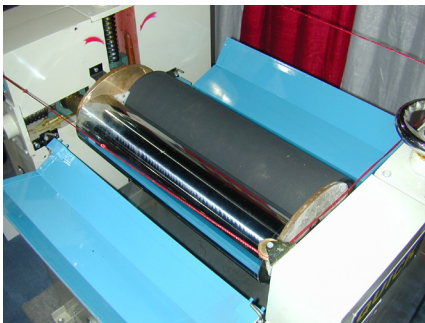
The QUICK 17" Roller Coater Glue Spreader is a relatively low-cost, industrial-duty glue spreader for flat panels. It has been specifically designed to apply water-based PVA (white or yellow) woodworking glues to solid wood panels, wood veneers, and high-pressure laminates.

Time-tested Design, Quality Construction

The classic 3- or 4-roll design is elegant in its simplicity and effectiveness.

The Roller Coater for 1-sided glue application has 3 rolls: On top, it has an 8" diameter grooved rubber glue-applying roll and a 5.8" diameter chrome-plated doctor roll. On the bottom, it has an 8" diameter rubber-covered pinch roll.

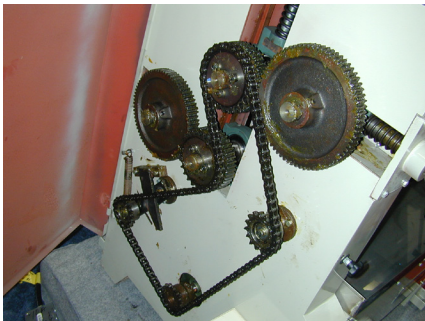
The Roller Coater for 2-sided glue application has 4 rolls: On top, it has an 8" diameter grooved rubber glue-applying roll and a 5.8" diameter chrome-plated doctor roll. On the bottom, it has a second 8" diameter grooved rubber glue-applying roll and a second 5.8" diameter chrome-plated doctor roll. (A 4-roll Spreader can also be used for top-only application).



Easy Operation & Clean-Up

Glue is placed in the trough(s) between the glue roll(s) and doctor roll(s). The glue spread and material thickness adjustments are made by turning the chrome-plated hand wheels.

Clean-up is accomplished quickly and easily with warm water and a bristle brush. An aluminum catch pan catches the waste water.



Other Sizes Available

QUICK Roller Coater Glue Spreaders are available in widths of 17", 24", 36", 42", 48", 54" and 63".

For additional information, including high-resolution photographs and Quicktime movies of our Glue Spreaders in operation, please visit our web site, or request a copy of our QUICK CD-ROM.



Value Leader in Gluing Equipment

Quick Machinery Company

23905 Clinton Keith 114-243, Wildomar, CA 92595

Phone: (951) 691-6086, Fax: (866) 399-1308

E-mail: kevin@quickmachinerycompany.com

www.quickmachinerycompany.com